

Sample Project Urban Drainage Area

Novlum

NOVLUM INC. 

10/20/2023

SAMPLE PROJECT

URBAN DRAINAGE AREA

CONTENTS

LIST OF FIGURES	2
LIST OF TABLES	2
1 MANHOLE: MH2815	3
1.1 OVERVIEW	3
1.2 SURVEY RESULTS	3
1.3 DIAGRAMS	4
1.4 COMPARISON WITH GIS	5
2 SUMMARY	5

LIST OF FIGURES

Figure : Top-down view of scan data for MH2815	4
Figure : Image of scan data from Pipe A for MH2815	5
Figure : Cross-section images of scan data at pipe ends for MH2815	5

LIST OF TABLES

Table : Overview of MH2815	3
Table : Survey results for MH2815	3
Table : Comparison of survey results and GIS data for MH2815	5
Table : Summary of Manhole and Pipe Levels	5

1 MANHOLE: MH2815

1.1 OVERVIEW

Table 1: Overview of MH2815

	Survey	GIS
Project Name	Sample Project	
Project Location	Urban Drainage Area	
Manhole Name	MH2815	
Lid Asset ID		40189831
Lid Diameter	N/A	N/A
Manhole Lid Easting	1,698,861.36 m	1,698,861.37 m*
Manhole Lid Northing	5,678,636.44 m	5,678,636.44 m
Manhole Lid Level	34.45 m	34.45 m
Shaft Diameter	1,200.00 mm	N/A*
Survey Date	Today	
Surveyed By	Me	

1.2 SURVEY RESULTS

Table 2: Survey results for MH2815

Pipe	Pipe Invert to Lid Level (m)	Invert Level (m)	Easting (m)	Northing (m)	Bearing (°)	Diameter (mm)	Flow Direction	Asset ID	Material
A	0.92	33.53	1,698,860.85	5,678,636.71	275.60°	300.00	Outlet	40189838	RCRRJ
B	0.88	33.57	1,698,861.22	5,678,637.14	339.51°	300.00	Inlet	40189834	RCRRJ
C	0.86	33.59	1,698,861.55	5,678,637.09	18.62°	300.00		40189835	RCRRJ
D	0.91	33.54	1,698,861.58	5,678,636.09	162.00°	300.00	Inlet		
E	0.89	33.56	1,698,861.86	5,678,636.65	90.64°	225.00	Inlet		

1.3 DIAGRAMS

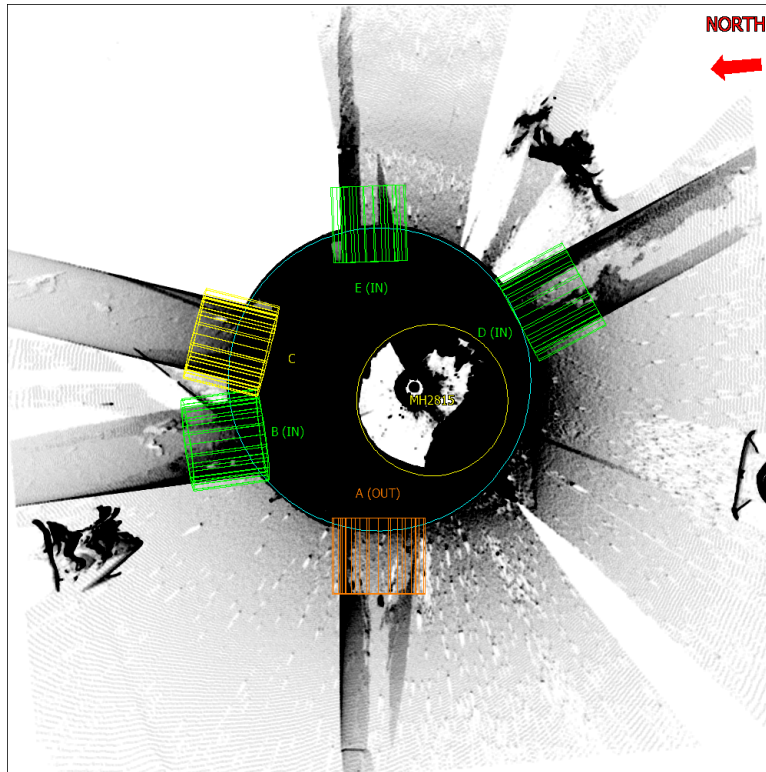


Figure 1: Top-down view of scan data for MH2815

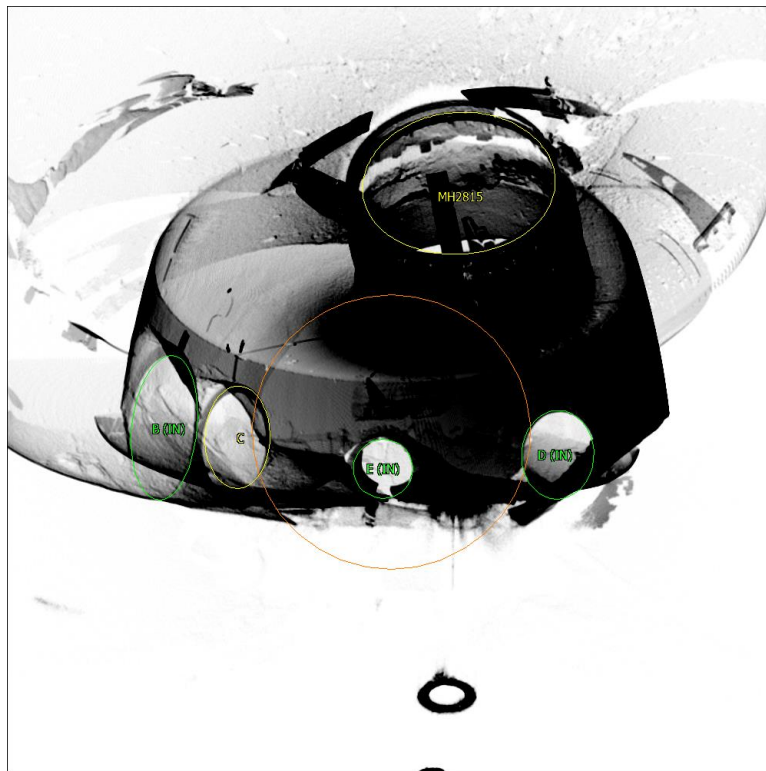


Figure 2: Image of scan data from Pipe A for MH2815

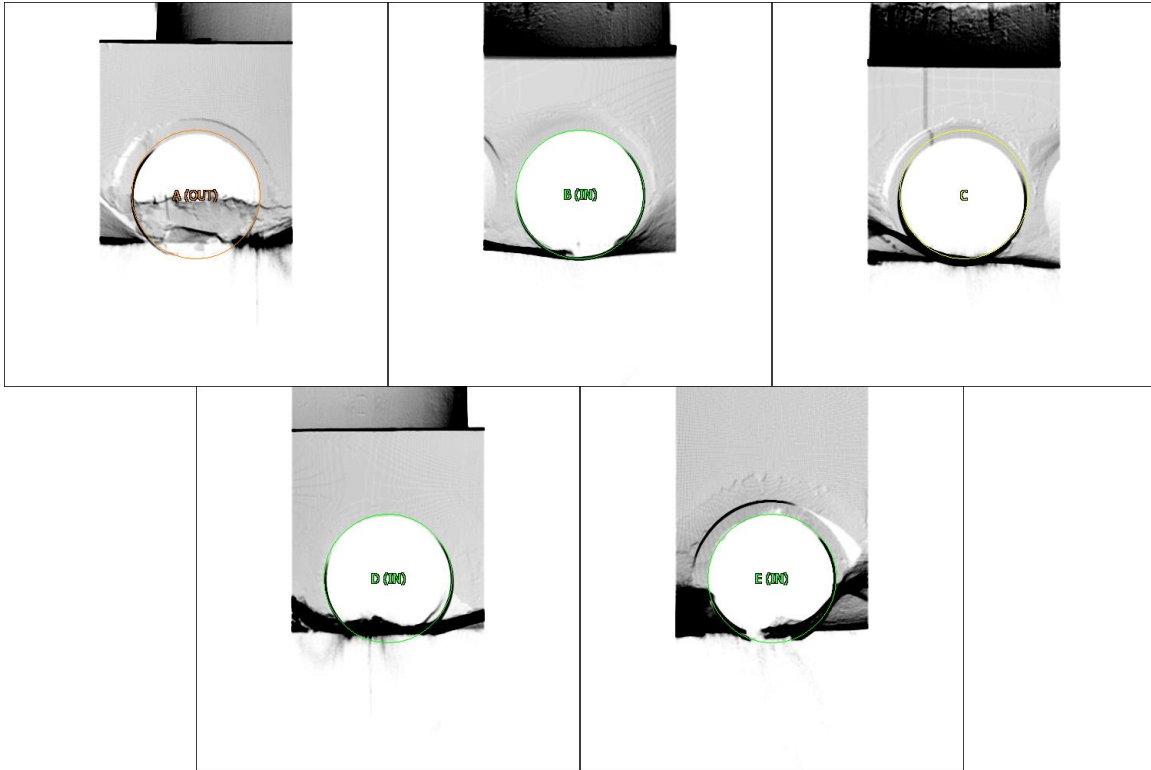


Figure 3: Cross-section images of scan data at pipe ends for MH2815

1.4 COMPARISON WITH GIS

Table 3: Comparison of survey results and GIS data for MH2815

Pipe	Survey Invert Level (m)	GIS Invert Level (m)	Survey Diameter (mm)	GIS Diameter (mm)
A	33.53	33.55*	300.00	375.00*
B	33.57	N/A*	300.00	300.00
C	33.59	N/A*	300.00	300.00
D	33.54	N/A*	300.00	N/A*
E	33.56	N/A*	225.00	N/A*

2 SUMMARY

Table 4: Summary of Manhole and Pipe Levels

Manhole ID	Lid Level (m)	Pipe ID	Survey Invert Level (m)
MH2815	34.45	A	33.53
		B	33.57
		C	33.59
		D	33.54
		E	33.56